



## QuickShelf

The fast and patented intermediate shelf system

The new fast-action QuickShelf intermediate shelf system can be used to efficiently transport and safely store goods stacked in multiple layers in large load carriers (LLCs). It does not require any specific system, can be integrated into any TRIPLEX pallet enclosure and supports process handling. It is the system that can help you save time, space and money.



## **QuickShelf: stack the smart way – with a system for safe transport and efficient storage**

When it comes to goods that are pressure-sensitive, fragile and non-stackable, maximising packing density while keeping those goods safe and sound during transport is a real challenge. One common approach is to stack the goods with protective intermediate shelves and additional packing materials between the various layers. However, that makes handling really time-consuming and has a negative impact on cost efficiency. What's more, the additional packing material needs to be disposed of afterwards.

The solution is QuickShelf – the fast intermediate shelf system. This patented system has been specially developed as an efficient and safe option for the multi-layered transport and storage of goods that are otherwise difficult or impossible to stack. It makes it possible to move fragile goods around safely and with maximum packing density, reduces emissions and saves on packaging materials, thus helping the environment, cost efficiency and process handling.

## The basic set – a firm foundation for the perfect start

The QuickShelf system consists of QuickShelf intermediate shelves with integral mounting brackets and at least four bracket strips, which each feature three mounting points and are welded or riveted to the inside of the pallet enclosure. When the intermediate shelves are inserted into the pallet enclosure, their mounting brackets clip engage with the bracket strips to form a solid connection. Loads are transmitted via the container sidewalls to ensure there is no weight bearing down on the goods in the layer(s) underneath. The products get the best protection possible.

## QuickShelf – the basic system components

- TRIPLEX pallet enclosure made of TRIPLEX 10 with a weight of 3,000 g/m<sup>2</sup> and with a colour similar to silver-grey RAL 7001
- At least four QuickShelf bracket strips, each with three mounting points
- QuickShelf intermediate shelves made of TRIPLEX 10 with a weight of 3,000 g/m<sup>2</sup> and with a colour similar to silver-grey RAL 7001

## Tried and tested over decades – TRIPLEX structured-core panels

The pallet enclosures and intermediate shelves of the QuickShelf system are made of TRIPLEX structured-core panels. These polypropylene panels are manufactured from three components that are welded together. The unique panel structure comprising two smooth outer layers and a symmetrical dimpled inner layer supports high compressive and flexural strength in all directions. This is what makes structured-core panels so different from conventional twin-wall sheets.



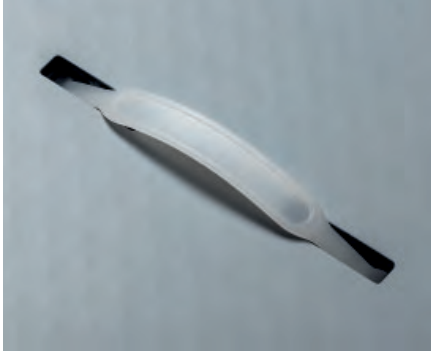


## Straightforward handling and cost-effective storage

The patented QuickShelf system also has another unique advantage. All intermediate shelves can be quickly and efficiently stacked in one LLC. When the front-to-back orientation of an intermediate shelf is turned 180 degrees, it will slide effortlessly down to the base of the pallet without engaging with the bracket strips. That means users can keep as many QuickShelf intermediate shelves in storage in a single LLC as they like, depending on the size of the LLC. This is a major advantage both in terms of space-saving storage while the intermediate shelves are waiting to be used again and in terms of fitting out pooling systems.

When using LLCs with a return collar, the QuickShelf intermediate shelves can also be stored in a space-saving configuration in the relevant system, along with the pallet, sleeve and lid. As a result, all the various components are kept together, whether full or empty.



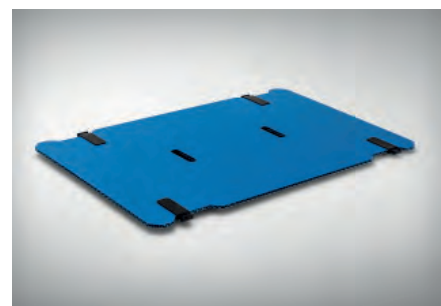
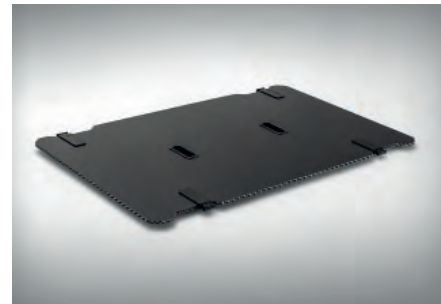


## Configuration options for customised applications

QuickShelf intermediate shelves are made as standard of TRIPLEX structured-core panels in a colour similar to silver-grey RAL 7001. There is also the option of applying a finish using materials from the CoverTec range – all to suit the requirements of the goods they will be used with. For example, CoverTec “slidestop” is an anti-slip coating that is ideal for transporting sensitive goods, while CoverTec “soft & smooth” uses non-woven fabric and foam to protect highly sensitive surfaces during transport. Simple grip holes, grip hole reinforcements and handles can also be selected for added comfort during handling. Similarly, the number of bracket strips can be altered to suit the size of the pallet enclosure. Everything can be custom-made and tailored flexibly to the requirements of the customer.

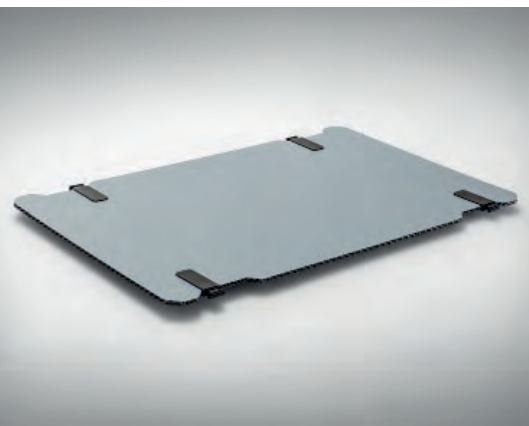
To make it easier and more convenient to empty out goods from containers, there is the option to incorporate unloading panels into TRIPLEX pallet enclosures. These can be varied in terms of their width and depth and be adjusted to suit the desired positioning of the QuickShelf bracket strips. When you need to maximise access to goods, QuickShelf and QuickFit offer the ideal combination. A two-part sleeve held together using the QuickFit profile provides ideal access to goods, as the front panel can be really easily removed and refitted.

Do you have special requirements regarding a very specific way of using the QuickShelf system? If so, then get in touch and our engineers will work with you to develop the ideal solution.



## QuickShelf compact

- Not system-dependent
- Intermediate shelves can be finished with CoverTec
- Intermediate shelves and pallet enclosure available in EcoLine or customised colours on request
- When not in use, all system components, including the pallet and lid, can be stored in a space-saving arrangement in combination with the return collar
- Grip holes, grip hole reinforcements and handles available as optional extras
- Bracket strips welded or, as an option, riveted into the sleeve
- TRIPLEX unloading panels
- Two-part TRIPLEX pallet enclosure with a front panel and QuickFit profile
- All system components are reusable



## The benefits at a glance

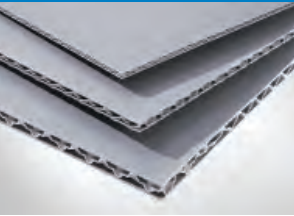
- Transport and storage of sensitive goods in multiple layers
- Transmission of load via container sidewalls ensures goods in upper layers don't press down on goods below
- Compact, space-saving storage of QuickShelf intermediate shelves in a single LLC, depending on its size
- Various storage options for the QuickShelf intermediate shelves ensure they don't get lost in production facilities
- Customised placement of the QuickShelf bracket strips and the three mounting points on each strip offer maximum flexibility for goods of varying heights
- Savings on packing materials
- Can be used repeatedly
- Damage resistant
- Savings on carbon emissions thanks to optimisation of packing density
- Simple, rapid handling
- Fully recyclable



## NextLoop service – good for the environment

TRIPLEX pallet enclosures are manufactured from pure polypropylene. This is a valuable raw material that should remain in circulation with a view to protecting the environment and conserving resources. Our NextLoop service plays an important part in ensuring that happens. When pallet enclosures are being used on a daily basis, it isn't always possible to stop them getting damaged and they will eventually reach the end of their useful life. When that happens, we are happy to repair enclosures for you or take them back and recycle them in our own facilities so they can be returned to the value chain. We pay an eco-bonus for this recovered material, which means that together we can play an active role in protecting the environment. The NextLoop service extends beyond TRIPLEX pallet enclosures and is available for virtually all polypropylene enclosures in a similar design.

Detailed information about the  
NextLoop service is available  
at [www.triplex.de](http://www.triplex.de)



## Our promise

The focus of our work is on ideas to impress and serve our clients, as we strive to anticipate your needs of tomorrow, today. We think beyond the conventional approach, to test the imagination and achieve exceptional solutions. Ever open to experience and to new ideas, we aim to continually redefine standards. As a family-owned enterprise, we listen carefully and are mindful of the importance of partnership and fair dealing. Everyone contributes – with heart and mind. We see ourselves as a partner to all: employees, clients and suppliers.



Interplast Kunststoffe GmbH  
Heinrich-Schickhardt-Straße 1  
72221 Haiterbach (Germany)  
Telephone: +49 (0)7456 69083-0  
Telefax: +49 (0)7456 69083-13  
info@interplast.de  
www.interplast.de

Certification:



A member of Infinex Group  
www.infinex-group.de